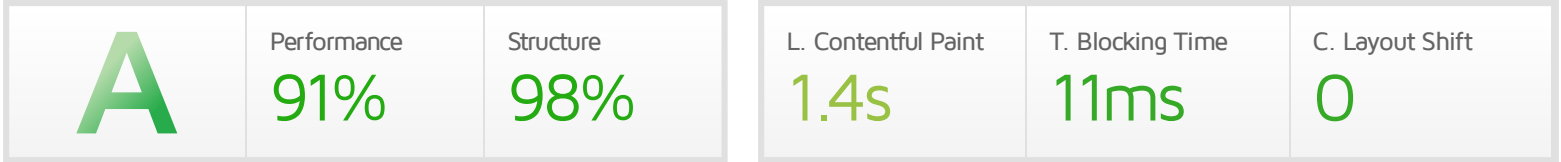


## Performance Report for: https://auto-hassankhayat.ma/

Report generated: Tue, Sep 20, 2022 6:54 AM -0700  
 Test Server Location: Vancouver, Canada  
 Using: Chrome (Desktop) 103.0.5060.134, Lighthouse 9.6.4



### Top Issues

IMPACT	AUDIT	
High	Reduce initial server response time <small>FCP LCP</small>	Root document took 816ms
Med-Low	Serve static assets with an efficient cache policy	Potential savings of 122KB
Low	Reduce unused JavaScript <small>LCP</small>	Potential savings of 206KB
Low	Eliminate render-blocking resources <small>FCP LCP</small>	Potential savings of 10ms
Low	Reduce unused CSS <small>FCP LCP</small>	Potential savings of 103KB

### Page Details



Total Page Size - 702KB



Total Page Requests - 25



Legend: HTML JS CSS IMG Video Font Other

### How does this affect me?

Today's web user expects a fast and seamless website experience. Delivering that fast experience can result in increased visits, conversions and overall happiness.

As if you didn't need more incentive, **Google has announced that they are using page speed in their ranking algorithm.**

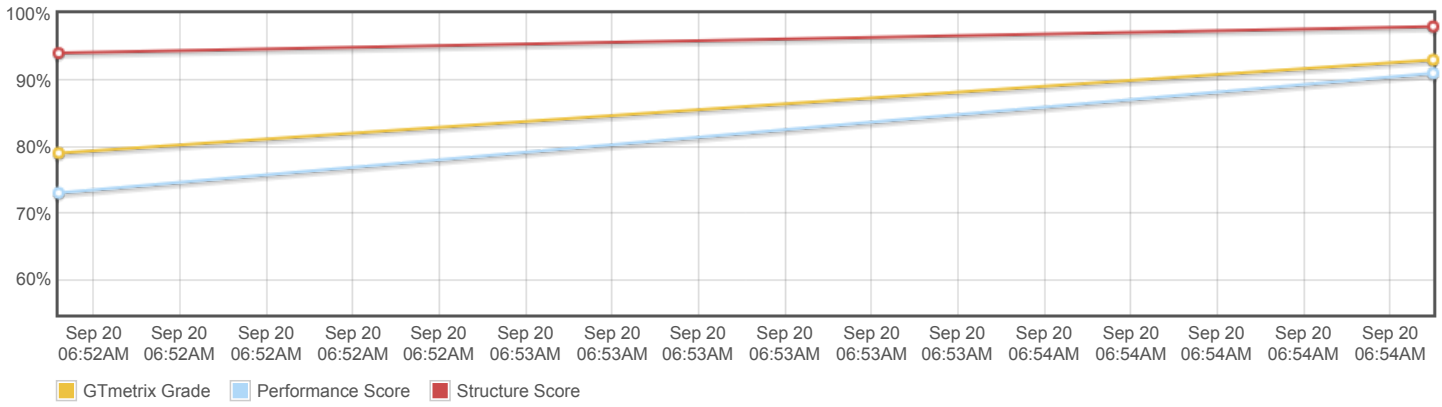
### About GTmetrix



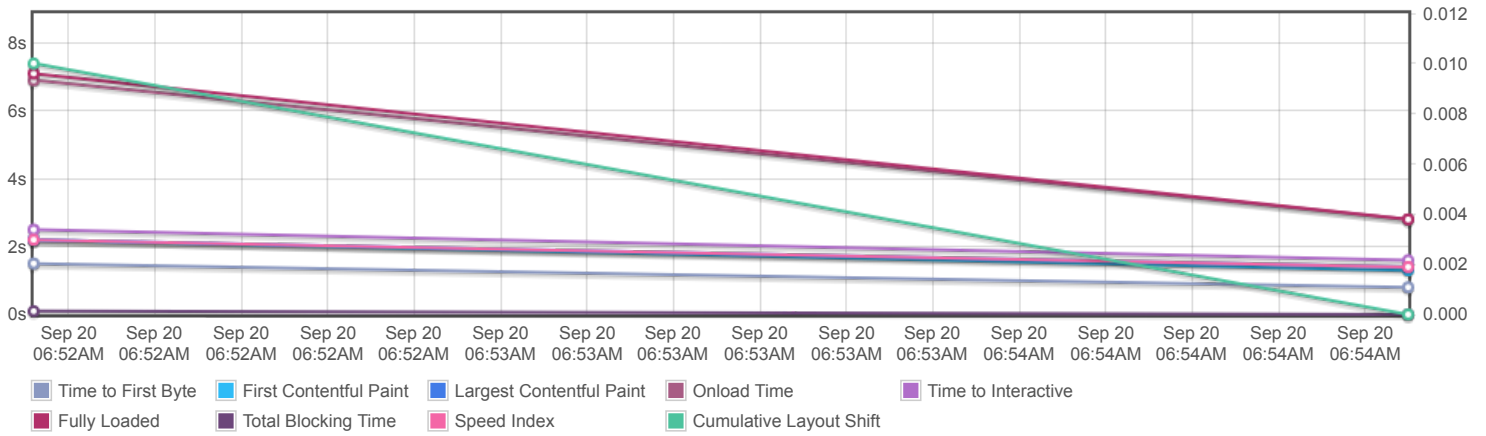
GTmetrix is developed by the good folks at Carbon60, a Canadian hosting company with over 26 years experience in web technology.

<https://carbon60.com/>

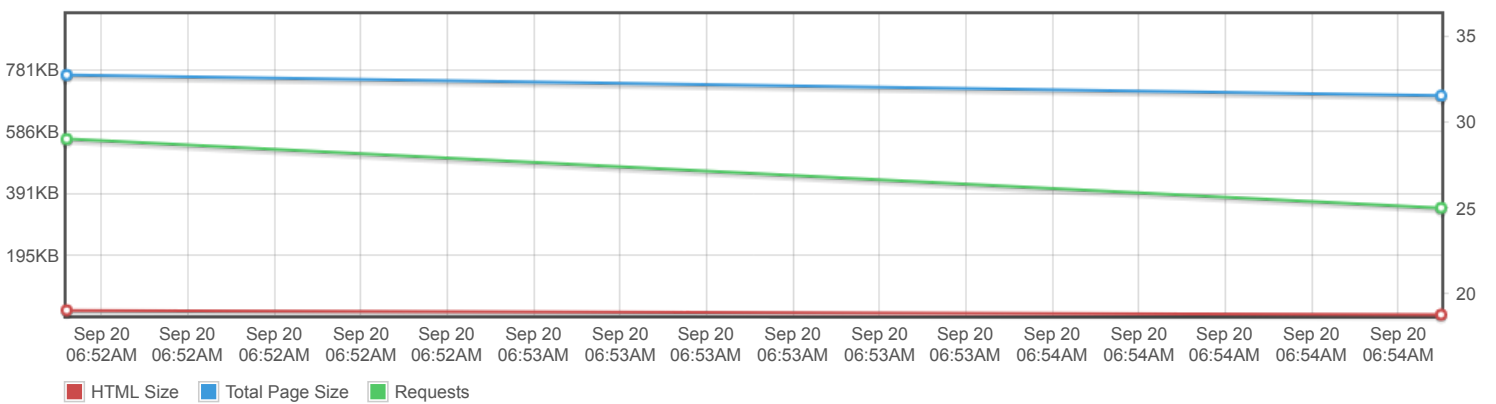
Page scores



Page metrics

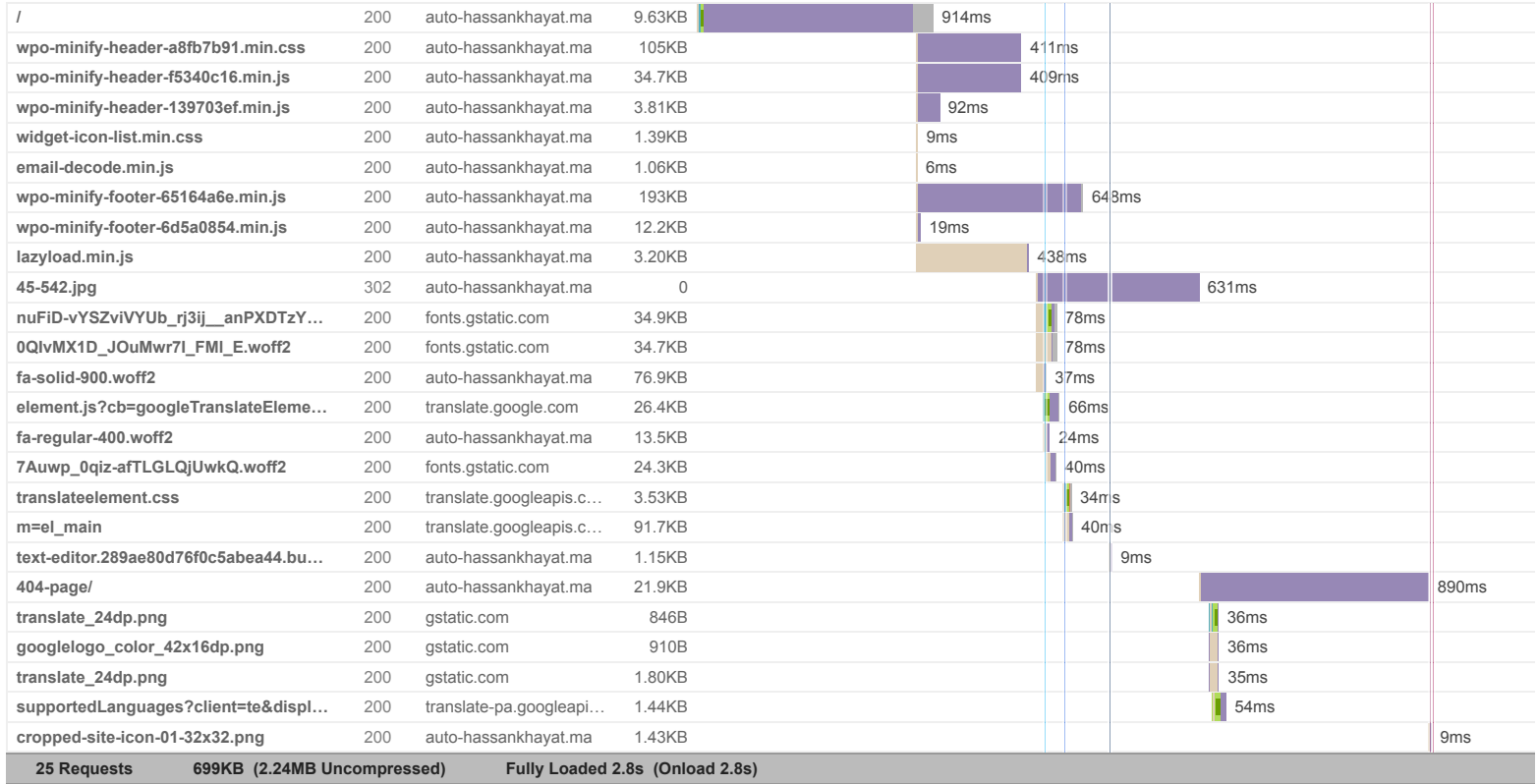


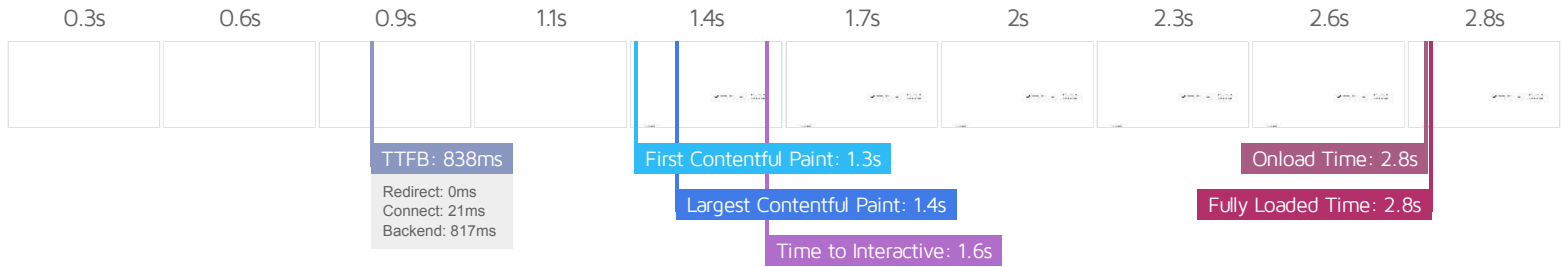
Page sizes and request counts



The waterfall chart displays the loading behaviour of your site in your selected browser. It can be used to discover simple issues such as 404's or more complex issues such as external resources blocking page rendering.

### Coming Soon – Auto Hassan Lkhayat





### Performance Metrics

<p><b>First Contentful Paint</b></p> <p>How quickly content like text or images are painted onto your page. A good user experience is 0.9s or less.</p>	<p>Longer than recommended</p> <p><b>1.3s</b></p>	<p><b>Time to Interactive</b></p> <p>How long it takes for your page to become fully interactive. A good user experience is 2.5s or less.</p>	<p>Good - Nothing to do here</p> <p><b>1.6s</b></p>
<p><b>Speed Index</b></p> <p>How quickly the contents of your page are visibly populated. A good user experience is 1.3s or less.</p>	<p>OK, but consider improvement</p> <p><b>1.4s</b></p>	<p><b>Total Blocking Time</b></p> <p>How much time is blocked by scripts during your page loading process. A good user experience is 150ms or less.</p>	<p>Good - Nothing to do here</p> <p><b>11ms</b></p>
<p><b>Largest Contentful Paint</b></p> <p>How long it takes for the largest element of content (e.g. a hero image) to be painted on your page. A good user experience is 1.2s or less.</p>	<p>OK, but consider improvement</p> <p><b>1.4s</b></p>	<p><b>Cumulative Layout Shift</b></p> <p>How much your page's layout shifts as it loads. A good user experience is a score of 0.1 or less.</p>	<p>Good - Nothing to do here</p> <p><b>0</b></p>

### Browser Timings

Redirect	0ms	Connect	21ms	Backend	817ms
TTFB	838ms	First Paint	1.3s	DOM Int.	1.6s
DOM Loaded	1.6s	Onload	2.8s	Fully Loaded	2.8s

IMPACT	AUDIT	
High	<b>Reduce initial server response time</b> <span>FCP</span> <span>LCP</span>	Root document took 816ms
Med-Low	<b>Serve static assets with an efficient cache policy</b>	Potential savings of 122KB
Low	<b>Reduce unused JavaScript</b> <span>LCP</span>	Potential savings of 206KB
Low	<b>Eliminate render-blocking resources</b> <span>FCP</span> <span>LCP</span>	Potential savings of 10ms
Low	<b>Reduce unused CSS</b> <span>FCP</span> <span>LCP</span>	Potential savings of 103KB
Low	<b>Avoid chaining critical requests</b> <span>FCP</span> <span>LCP</span>	11 chains found
Low	<b>Avoid an excessive DOM size</b> <span>TBT</span>	300 elements
Low	<b>Avoid enormous network payloads</b> <span>LCP</span>	Total size was 702KB
Low	<b>Ensure text remains visible during webfont load</b> <span>FCP</span> <span>LCP</span>	3 fonts found
Low	<b>Avoid long main-thread tasks</b> <span>TBT</span>	1 long task found
Low	<b>Reduce JavaScript execution time</b> <span>TBT</span>	61ms spent executing JavaScript
Low	<b>Avoid serving legacy JavaScript to modern browsers</b> <span>TBT</span>	Potential savings of 49B
Low	<b>Avoid non-composited animations</b> <span>CLS</span>	1 animated element found
N/A	<b>Largest Contentful Paint element</b> <span>LCP</span>	1 element found
N/A	<b>Avoid large layout shifts</b> <span>CLS</span>	3 elements found
N/A	<b>Minimize main-thread work</b> <span>TBT</span>	Main-thread busy for 524ms
N/A	<b>User Timing marks and measures</b>	1 user timing
N/A	<b>Reduce the impact of third-party code</b> <span>TBT</span>	Total size was 221KB