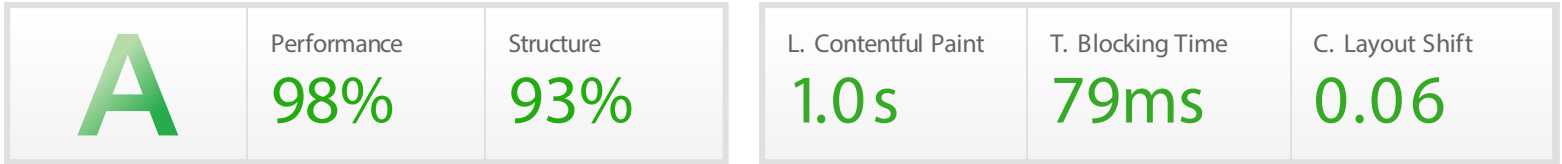


Performance Report for: <https://marocdec.com/>

Report generated: Mon, Aug 7, 2023 8:18 AM -0700

Test Server Location: Vancouver, Canada

Using: Chrome (Desktop) 103.0.5060.134, Lighthouse 9.6.4



Top Issues

IMPACT	AUDIT	
Med	Serve static assets with an efficient cache policy	Potential savings of 526KB
Med-Low	Use a Content Delivery Network (CDN)	47 resources found
Med-Low	Avoid an excessive DOM size <small>TBT</small>	1,134 elements
Low	Eliminate render-blocking resources <small>FCP LCP</small>	Potential savings of 110ms
Low	Reduce unused CSS <small>FCP LCP</small>	Potential savings of 259KB

Page Details



Total Page Size - 1.53MB



Total Page Requests - 66



■ HTML
 ■ JS
 ■ CSS
 ■ IMG
 ■ Video
 ■ Font
 ■ Other

How does this affect me?

Today's web user expects a fast and seamless website experience. Delivering that fast experience can result in increased visits, conversions and overall happiness.

As if you didn't need more incentive, **Google has announced that they are using page speed in their ranking algorithm.**

About GTmetrix

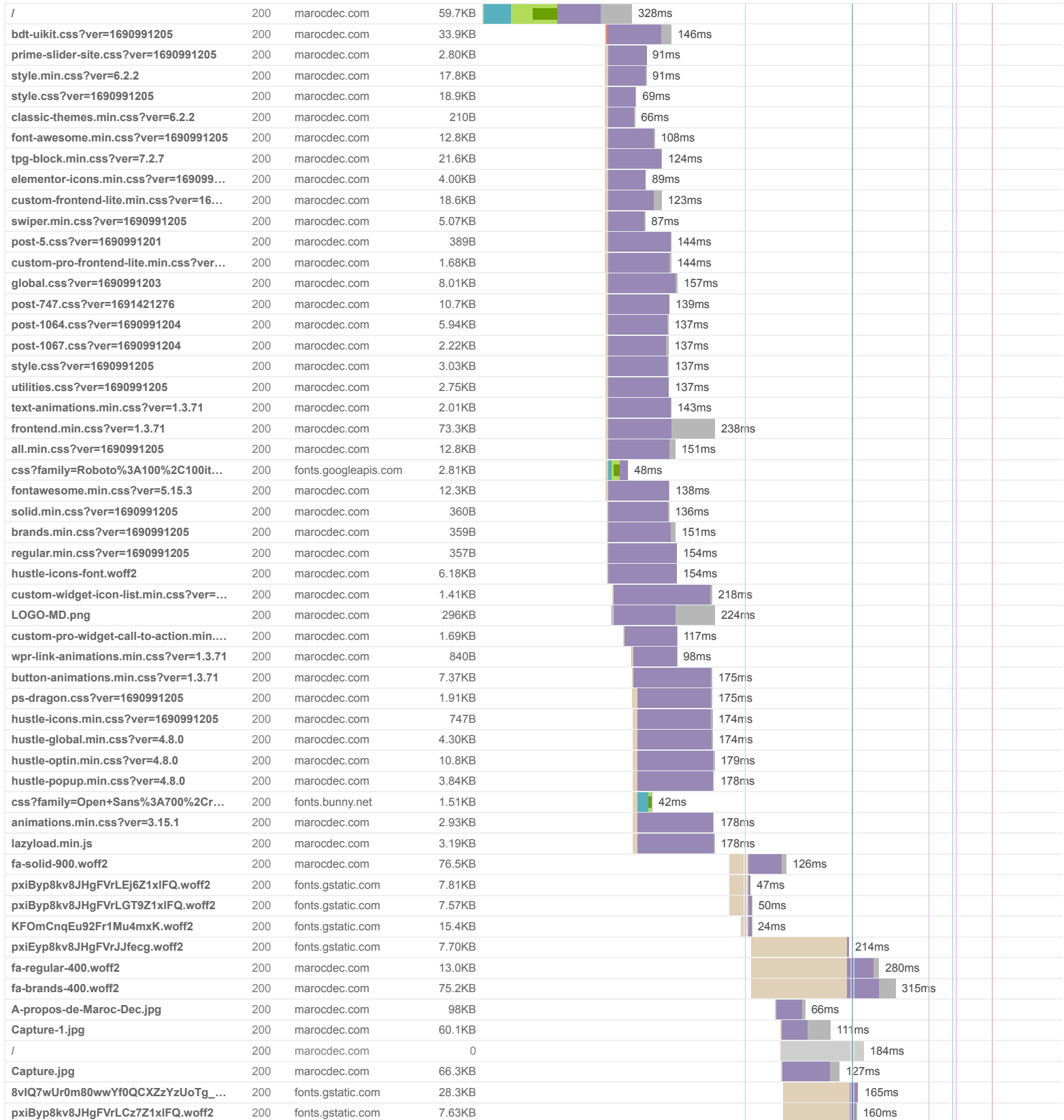
CARBON60
THE MANAGED CLOUD COMPANY

GTmetrix is developed by the good folks at **Carbon60**, a Canadian hosting company with over 27 years experience in web technology.

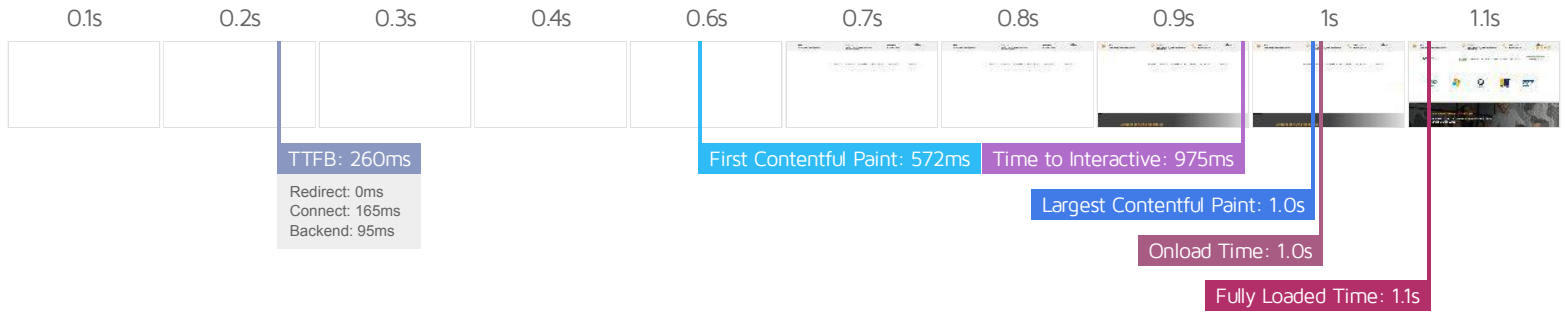
<https://carbon60.com/>

The waterfall chart displays the loading behaviour of your site in your selected browser. It can be used to discover simple issues such as 404's or more complex issues such as external resources blocking page rendering.

Accueil - MarocDec



KFOICnqEu92Fr1MmWUifBBc4.woff2	200	fonts.gstatic.com	15.5KB		161ms		
KFOICnqEu92Fr1MmEU9fBBc4.woff2	200	fonts.gstatic.com	15.5KB		161ms		
pxiByp8kv8JHgFVrLFj_Z1xIFQ.woff2	200	fonts.gstatic.com	7.75KB		164ms		
eicons.woff2?5.21.0	200	marocdec.com	92.4KB		211ms		
KFOICnqEu92Fr1MmSU5fBBc4.woff2	200	fonts.gstatic.com	15.4KB		101ms		
PARTNERS_Plan-de-travail-1-1-150x1...	200	marocdec.com	7.71KB		70ms		
PARTNERS-02-1-150x119.png	200	marocdec.com	4.25KB		93ms		
PARTNERS-03-1-150x119.png	200	marocdec.com	7.92KB		75ms		
PARTNERS-04-1-150x119.png	200	marocdec.com	7.65KB		94ms		
PARTNERS-05-1-150x119.png	200	marocdec.com	5.24KB		75ms		
PARTNERS-06-1-150x119.png	200	marocdec.com	8.27KB		69ms		
cropped-LOGO-MD-1-32x32.png	200	marocdec.com	1.45KB				65ms
66 Requests 1.30MB (3.12MB Uncompressed) 1.1s (Onload 1s)							



Performance Metrics

<p>First Contentful Paint</p> <p>How quickly content like text or images are painted onto your page. A good user experience is 0.9s or less.</p>	<p>Good - Nothing to do here</p> <p>572ms</p>	<p>Time to Interactive</p> <p>How long it takes for your page to become fully interactive. A good user experience is 2.5s or less.</p>	<p>Good - Nothing to do here</p> <p>974ms</p>
<p>Speed Index</p> <p>How quickly the contents of your page are visibly populated. A good user experience is 1.3s or less.</p>	<p>Good - Nothing to do here</p> <p>1.0s</p>	<p>Total Blocking Time</p> <p>How much time is blocked by scripts during your page loading process. A good user experience is 150ms or less.</p>	<p>Good - Nothing to do here</p> <p>79ms</p>
<p>Largest Contentful Paint</p> <p>How long it takes for the largest element of content (e.g. a hero image) to be painted on your page. A good user experience is 1.2s or less.</p>	<p>Good - Nothing to do here</p> <p>1.0s</p>	<p>Cumulative Layout Shift</p> <p>How much your page's layout shifts as it loads. A good user experience is a score of 0.1 or less.</p>	<p>Good - Nothing to do here</p> <p>0.06</p>

Browser Timings

Redirect	0ms	Connect	165ms	Backend	95ms
TTFB	260ms	First Paint	572ms	DOM Int.	805ms
DOM Loaded	807ms	Onload	1.0s	Fully Loaded	1.1s

IMPACT	AUDIT	
Med	Serve static assets with an efficient cache policy	Potential savings of 526KB
Med-Low	Use a Content Delivery Network (CDN)	47 resources found
Med-Low	Avoid an excessive DOM size <small>TBT</small>	1,134 elements
Low	Eliminate render-blocking resources <small>FCP LCP</small>	Potential savings of 110ms
Low	Reduce unused CSS <small>FCP LCP</small>	Potential savings of 259KB
Low	Defer offscreen images	Potential savings of 186KB
Low	Serve images in next-gen formats	Potential savings of 306KB
Low	Avoid large layout shifts <small>CLS</small>	5 elements found
Low	Avoid enormous network payloads <small>LCP</small>	Total size was 1.53MB
Low	Avoid long main-thread tasks <small>TBT</small>	4 long tasks found
Low	Reduce JavaScript execution time <small>TBT</small>	67ms spent executing JavaScript
Low	Reduce initial server response time <small>FCP LCP</small>	Root document took 95ms
Low	Avoid serving legacy JavaScript to modern browsers <small>TBT</small>	Potential savings of 167B
Low	Avoid non-composited animations <small>CLS</small>	6 animated elements found
Low	Avoid chaining critical requests <small>FCP LCP</small>	48 chains found
N/A	Largest Contentful Paint element <small>LCP</small>	1 element found
N/A	Minimize main-thread work <small>TBT</small>	Main-thread busy for 704ms
N/A	Reduce the impact of third-party code <small>TBT</small>	Total size was 133KB
N/A	User Timing marks and measures	